



THE HONG KONG
POLYTECHNIC UNIVERSITY
香港理工大學

COLLEGE OF PROFESSIONAL AND
CONTINUING EDUCATION
專業及持續教育學院

School of Professional Education
and Executive Development
專業進修學院

SPEED

Centre for
Ageing and
Healthcare
Management
Research

老齡化和醫療管理研究中心

Centre for Ageing and Healthcare Management Research Research Seminar

How can the **diabetic retinopathy screening** be provided to the
diabetic population in Hong Kong
by considering the equity and efficiency?

Date : 13 January 2021 (Wednesday)

Time : 11:00 am to 12:00 pm

**Mode of
Presentation** : Online (Zoom)

Language : English

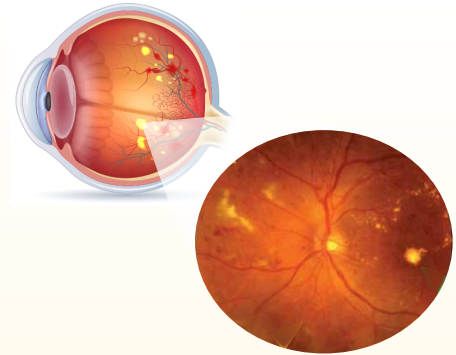


Online Registration



Speaker

Dr Tina Jinxiao LIAN
Research Assistant Professor,
School of Optometry,
The Hong Kong Polytechnic University



Chair

Dr Ben Yuk-fai FONG
Associate Division Head,
Division of Science, Engineering and Health Studies,
College of Professional and Continuing Education,
and Director, CAHMR, SPEED,
The Hong Kong Polytechnic University

Co-Organisers: Hong Kong College of Community Health Practitioners
Hong Kong College of Health Service Executives
Hong Kong College of Nursing and Health Care Management



For registration, please visit <https://bit.ly/3l4o9TE> on or before **11 January 2021 (Monday)**

For enquiry, please contact: spcahmr@speed-polyu.edu.hk